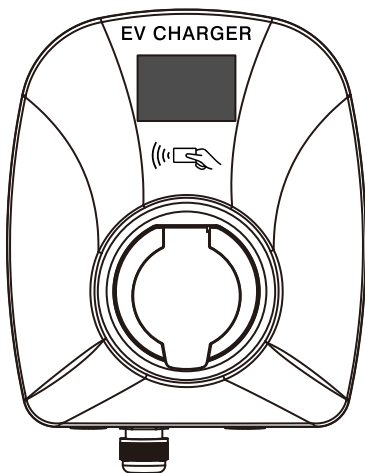
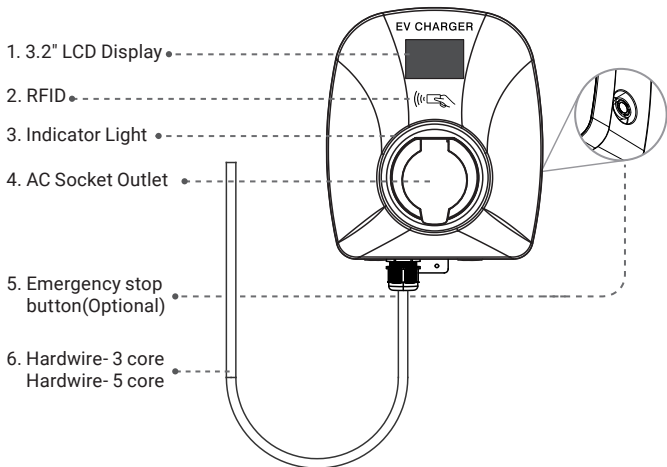




Wallbox EV Charger AC Socket Outlet User Manual



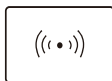
01/Product Overview



What is in the box



Charging station



RFID card × 2



Hanging board × 1



User manual × 1

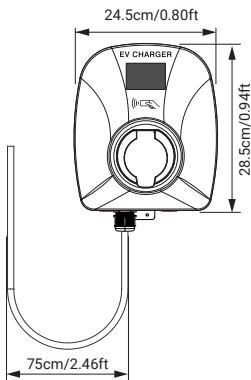


APP User Manual × 1



TA5*30mm × 5

02/Dimension



03/Technical Specifications

General			
Power	7KW	11KW	22KW
Voltage	230Vac±10%	380Vac±10%	380Vac±10%
Powe Supply	1 Phase	3 Phase	3 Phase
Current	8~32A	8~16A	8~32A
Power Plug	3 core hardwire	5 core hardwire	5 core hardwire
Working Environment			
Working Temp.	-25°C~+55°C		
Humidity	5%~95% Non-Condensing		
IP Rate	IP65		
IK Rate	IK10		
Work Altitude	<2000m		
Connectivity			
Bluetooth	Available		
Wi-Fi	Available		
Ethernet	Available		
RFID Card	Available		
OCPP1.6J	Available		
RS485	Available		
4G Module	Optional		
DLB Kit	Optional		
MID Meters	Optional		

Dimension & Package	
Control box	L285 × W245 × H138mm
Input Cable	0.75 Meters/Customized
Inner Box	L450 × W340 × H170mm
Net Weight	2.60kgs (7KW); 2.50kgs (11KW); 2.84kgs (22KW)
Outer Carton	L700 × W465 × H360mm

04/Safety Protection



Temperature Protection



Auto Repair



Efficient Charging



Protection Level IP54



RCD



High End MCU



Under Voltage Protection



Over Voltage Protection



Short Circuit Protection



Earth Leakage Protection



Lightning Protection



Over Load Protection

05/Important Safety Instructions

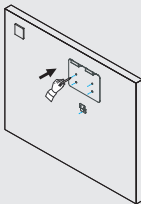
1. Ensure that the equipment is well grounded before powering it on.
2. Keep the charging gun head clean and dry. If it gets dirty, wipe it with a clean and dry cloth.
3. Do not touch the charging gun with your hands while charging.
4. Make sure that the input voltage, frequency, circuit breaker, or fuse of the device and other conditions meet the specifications before powering on the equipment.
5. Insulate all tools as necessary to prevent bare metal parts from touching the metal frame and causing a short circuit.
6. Do not attempt to disassemble, repair or modify the charging pile. If maintenance or modification is necessary, contact the staff. Improper operation can result in equipment damage, water leakage, leakage, and other hazards. This equipment should be installed, adjusted, and serviced by qualified electrical personnel familiar with the construction and operation of this type of equipment and the hazards involved.
7. The equipment should be operated in a clean, constant temperature, and constant humidity environment as much as possible, and the operating environment must not contain volatile gases or flammable gases.
8. Charge with caution during rain and thunder.
9. Follow the instructions strictly during use. Do not allow children to get close to or use the charging pile while charging to avoid injury.
10. After charging is complete, hang the charging gun properly back into the charging gun base. Avoid placing the charging gun head at random or dropping it on the ground to prevent safety accidents.

06/Installation Instructions

WARNING: Turn off the power before you begin the installation. Use extreme caution and follow instructions carefully.

1. Drilling

1



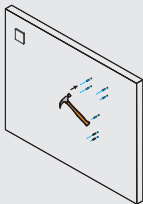
1. Use the plate to mark the location of the screw holes on the wall where you plan to mount the station

2



2. Use a hammer drill to make holes in the wall where you marked the locations

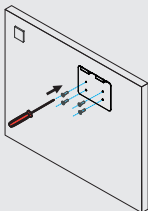
3



3. Hammer the Plastic Expansion Anchors into the holes you drilled

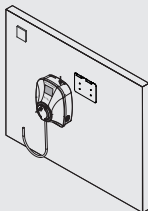
2.Mounting

1



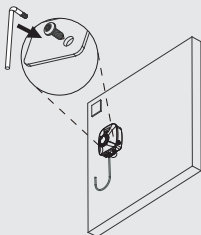
1. Fix the Hanging board to the wall by TA5*30mm screws

2



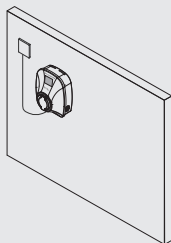
2. Hang the wallbox station on the plate that is now affixed to the wall

3



3. Lock the bottom anti-sheft by TA5*30mm screws

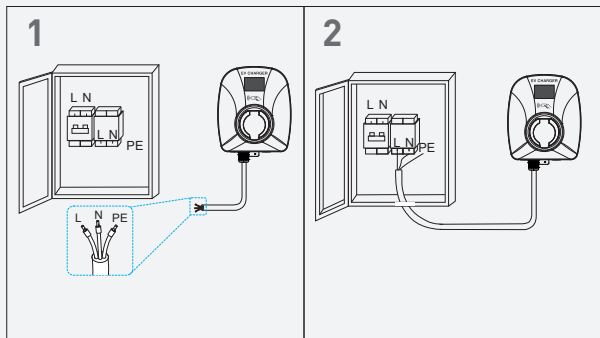
4



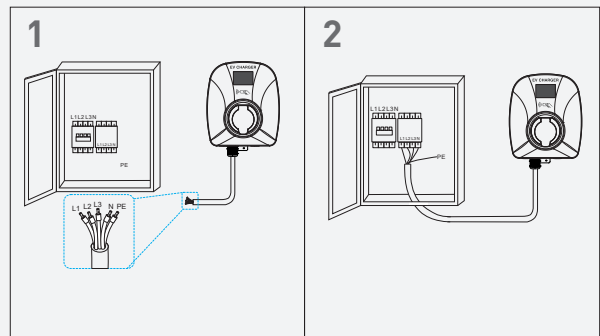
4. Power on

3.Wiring

1.Single Phase: If using a distribution box, the input terminals L, N, and PE correspond respectively to the output terminals L, N, and PE of the circuit breaker.



2.Three Phase: If using a distribution box, the input terminals L1, L2, L3, N, and PE correspond respectively to the output terminals L1, L2, L3, N, and PE of the circuit breaker.



07/Indicator Light Description

Status		Station Interface			
Station Status	Description	Mobile APP	RGB Indicator Light		
			Blue	Green	Red
Power on (Unplugged)	Grounded	Available	Stay on	–	–
	Ungrounded	Available	Flashing slow	–	–
Plug in	Preparing	Preparing	–	Stay on	–
Booking the Charging time	Reserved	Reserved	–	Flashing slow	–
Charging	Grounded	Charging	–	Flashing slow	–
	Ungrounded	Charging	–	Flashing fast	–
Charging Completed	Finished	Finished	–	Stay on	–
Emergency Stop	Emergency Stop	Faulted	–	–	Flashing slow

Customer Support

For Technical Assistance Call:

T: 0086-180-254-31819

E: Sales@hysunpower.com

For additional products and information, please visit our website at:
www.hysunpower.com.